

Building Specification

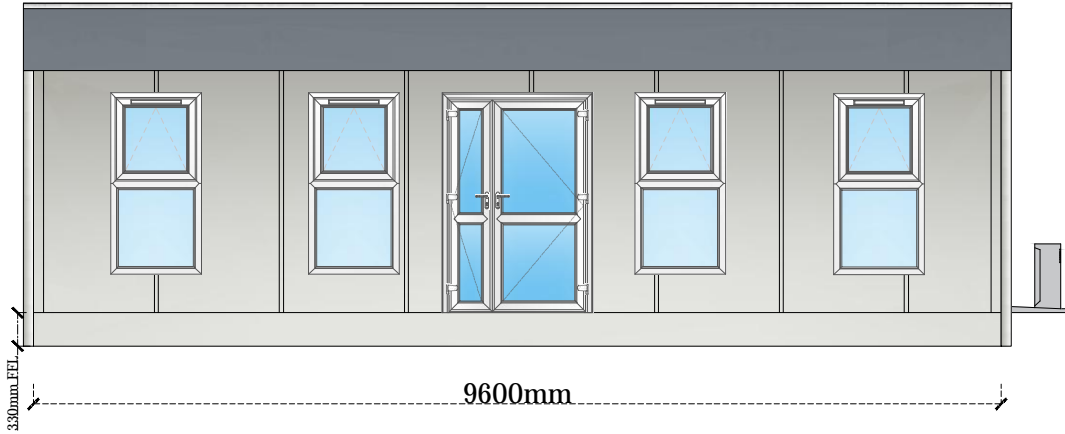
Main Body: Goosewing Grey, 10A05
Finish: Plastic Coated Steel
Fascia: Merlin Grey, 18B25
Corners: Goosewing Grey, 10A05

Door: White uPVC

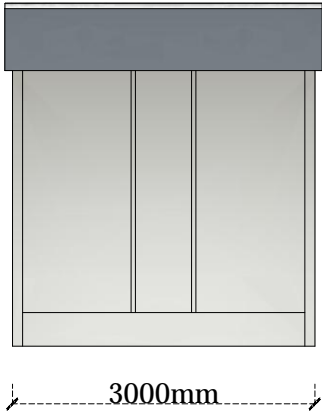
Windows: White uPVC

Flooring: Vinyl - Polyflor XL PU - Fossil 3710

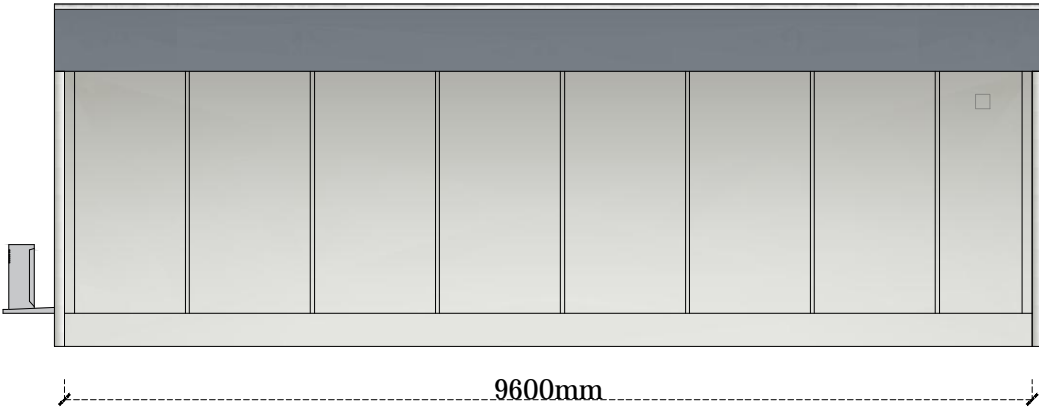
Elevation A



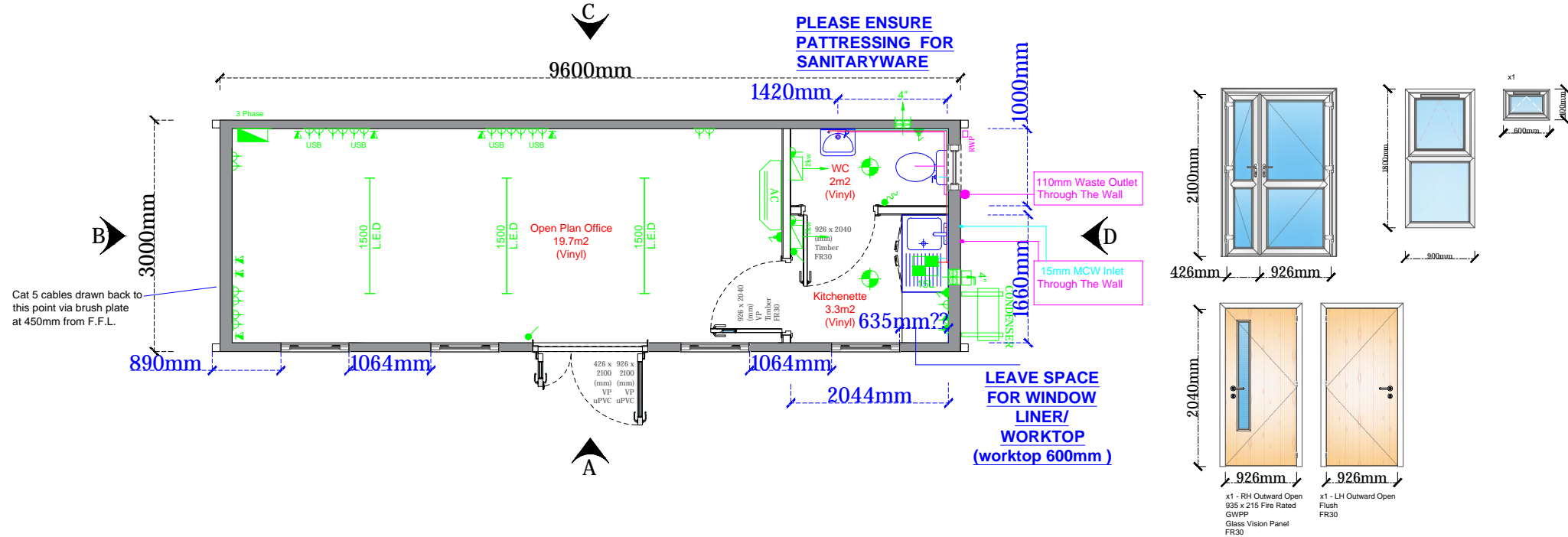
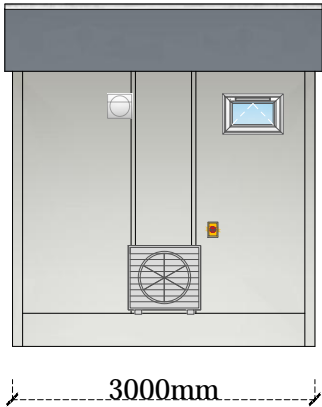
Elevation B



Elevation C



Elevation D



Drawing Legend

	Distribution Board
	Electrical Inlet
	Single 13Amp Socket (450mm AFFL)
	Double 13Amp Socket (450mm AFFL)
	Double 13Amp Socket (1100mm AFFL)
	H/L Single Switch Fused Spur
	Below Work Top Level Single Switched Spur
	Switched Spur
	Unswitched Spur
	Telephone Outlet Socket (450mm AFFL)
	Data Point
	20A DP Isolator
	45A DP Isolator
	6A Double Pole Pullswitch
	20A Double Pole Lightswitch (1200 AFFL)
	HL Convector Heater
	Convector Heater
	Tubular Heater
	Under Sink Water Heater
	Emergency Lighting
	Internal Bulkhead Light
	Fluorescent Light With Diffuser
	Category 2 Lighting
	L.E.D Tubular Lighting
	Vapor Proof Fluorescent Light
	External Bulkhead Lighting
	Passive Infrared Sensor
	Extractor Fan
	Air Conditioning Condenser
	Air Conditioning Unit
	Cold Water Point
	Rainwater Down Pipe
	Foul Outlet
	Frost Thermostat

REV	DATE	DESCRIPTION	BY
A	27/11/2020	Partition and 1 No. AC unit removed.	J.H
B	07/11/2020	Electrics / notes updated	SA



Client:			
OPM Furniture			
Project:			
Refurbished One Bay 9.6m x 3m			
Drawing:			
Plan & Elevations			
Drawn By:		Date:	
J.H		26/11/2020	
Checked By:		Sheet:	
		A3	
Drawing Number:		Scale:	
PBSE7615 - 04		1:75	
Rev:		Stock Reference:	
B			

This drawing is to be read in conjunction with all related drawings. Do not scale from this drawing. All dimensions must be checked and verified on site before commencing any work or producing shop drawings. The originator should be notified immediately of any discrepancy. This drawing is copyright and remains the property of Portable Building Sales Ltd.