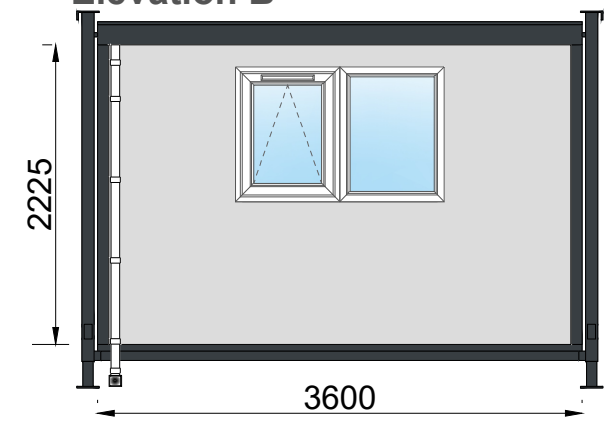


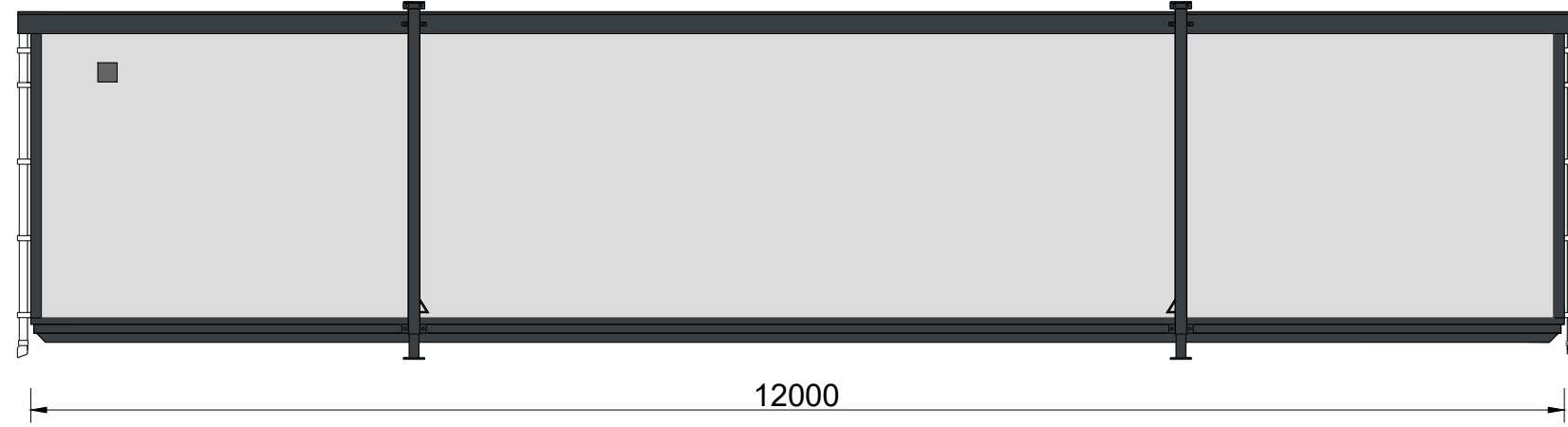
Elevation A



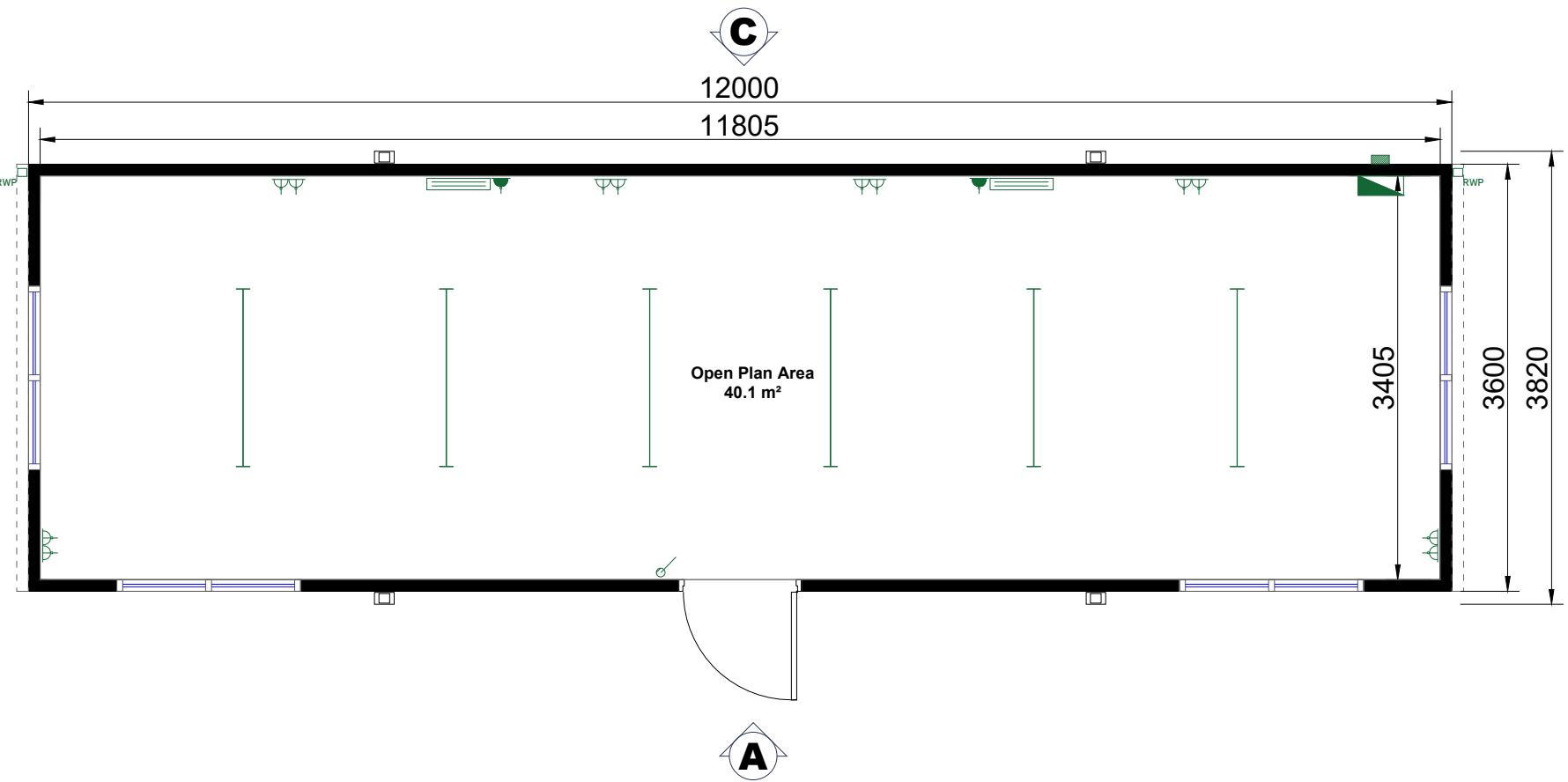
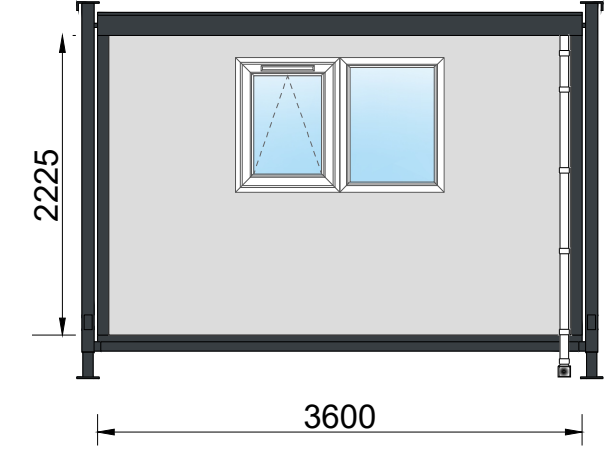
Elevation B



Elevation C



Elevation D



Building Specification

- Main Body: Goosewing Grey, BS10A05
- Finish: Plastic Coated Steel
- Fascia: Anthracite, RAL7016
- Corners: Anthracite, RAL7016
- Jacklegs: Anthracite, RAL7016
- Door: Steel Door with Vision Panel, Anthracite RAL7016
- Windows: uPVC, White
- Flooring: Polyflor XL PU - Flint, 3720

Drawing Legend

- Electrical**
 - Distribution Board
 - Electrical Inlet
 - Double Socket (450mm AFFL)
 - Lightswitch (1200 AFFL)
- Heating**
 - Panel Heater
- Lighting**
 - L.E.D Batten Light
- Water**
 - Rain Water Pipe

Drawing for Illustration Purposes

Rev	Description	Date	By

PBS.
Portable Building Sales

Part of Wernick Refurbished Buildings Ltd. **Wernick** REFURBISHED BUILDINGS

CLIENT			
TBC			
PROJECT			
40' x 12' (12.0m x 3.6m) Portable Cabin			
DRAWING			
Floor Plan and Elevations			
DRAWN	CHECKED	DATE	SCALE
SM		06.11.24	NTS
DRAWING No.			REVISION
STOCK 40'x12'-PC-FP&E-STEEL			-
CONTRACT No.			

40' x 12' (12.0m x 3.6m) Portable Cabin