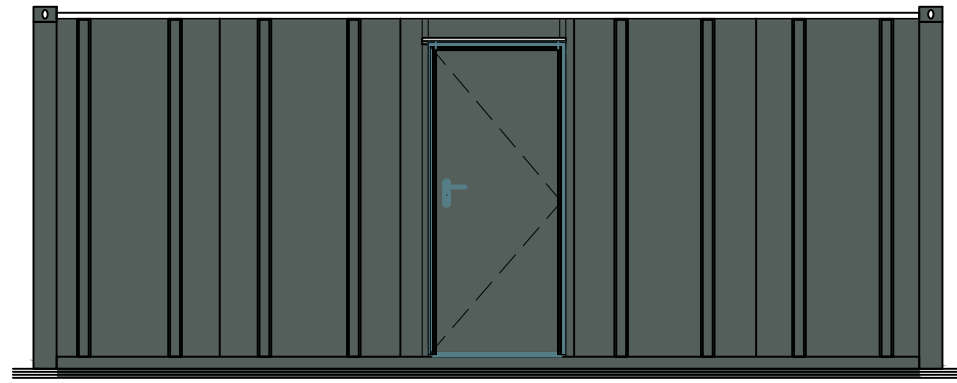
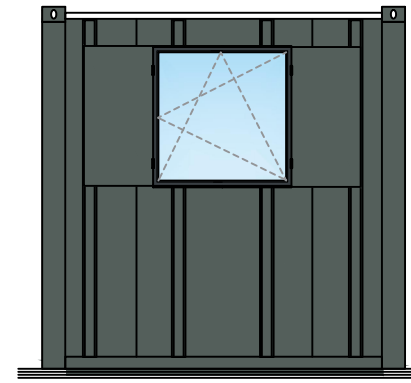


Elevation A



Elevation B



Building Specification

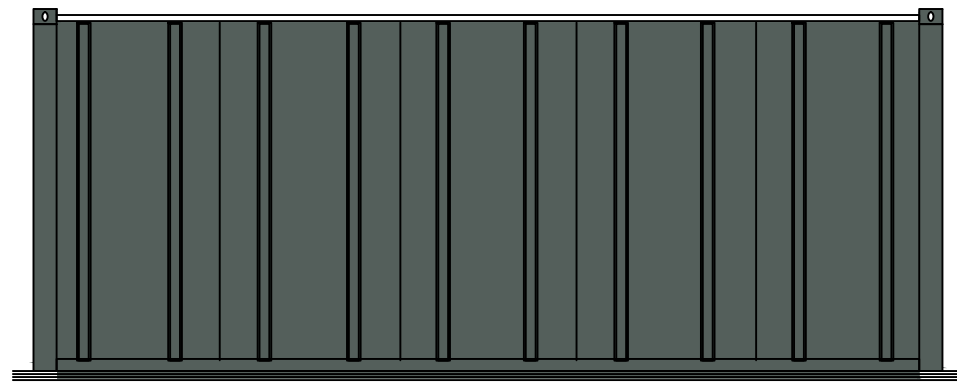
Main Body: Colour Merlin Grey 18B25
Finish : Corrugated Steel/Sprayed

Door : Kirncroft,
(910 x 2065mm)

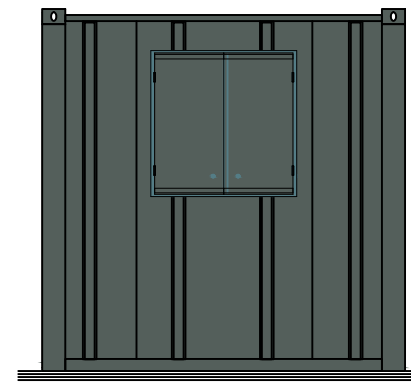
Windows: UPVC Tilt and Turn (915 x 915mm) C/W Steel

Flooring: (Vinyl) Polyflor XL PU Flint 3720

Elevation C



Elevation D



Drawing Legend

Electrical	
	Distribution Board
	Electrical Inlet
	Double 13Amp Socket (450mm AFFL)
	13A 1 Gang 1 Way Lightswitch (1200 AFFL)
Heating	
	Panel Heater
Lighting	
	L.E.D Batten Light

6000mm

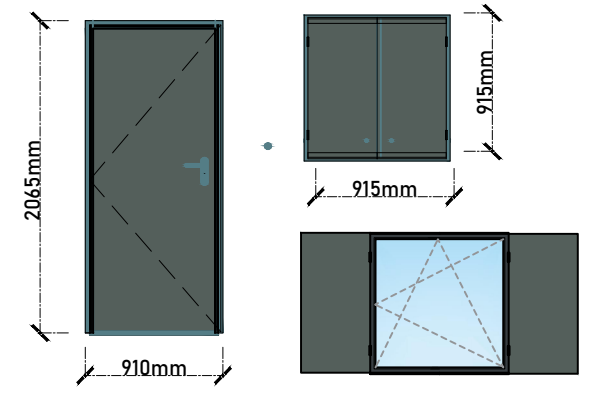
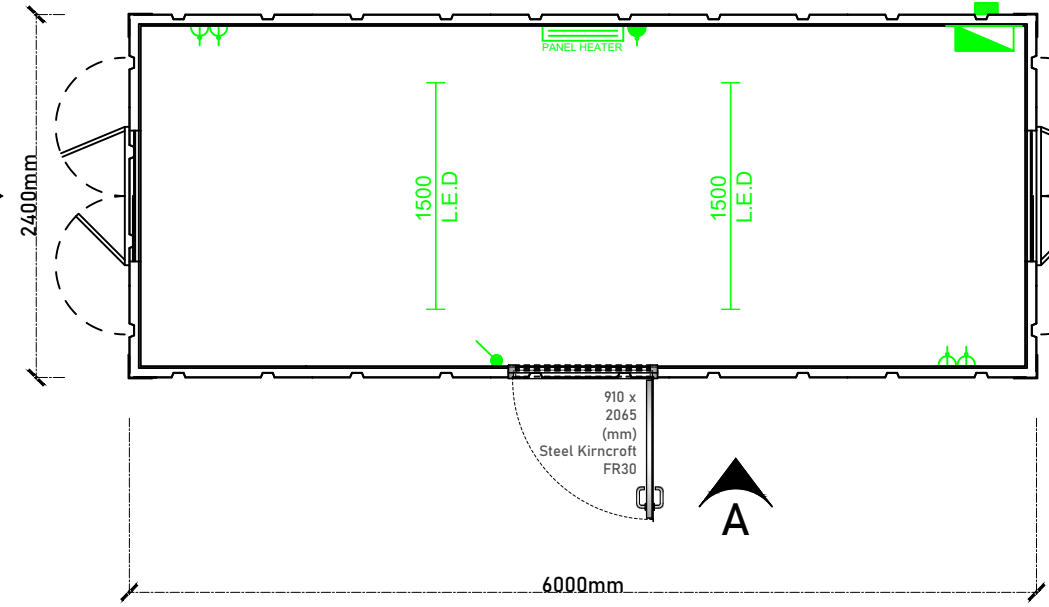
2400mm

C

D

B

A



REV	DATE	DESCRIPTION



Stock	
Project: New Anti-Vandal Unit 20' x 8'	
Drawing: Plan & Elevations	
Drawn By: S.A.A.	Date: 08/12/2020
Checked By:	Sheet: A3 Scale: 1:50
Drawing Number: PBSS2232	Rev: Stock Reference:

This drawing is to be read in conjunction with all related drawings. Do not scale from this drawing. All dimensions must be checked and verified on site before commencing any work or producing shop drawings. The originator should be notified immediately of any discrepancy. This drawing is copyright and remains the property of Portable Building Sales Ltd.