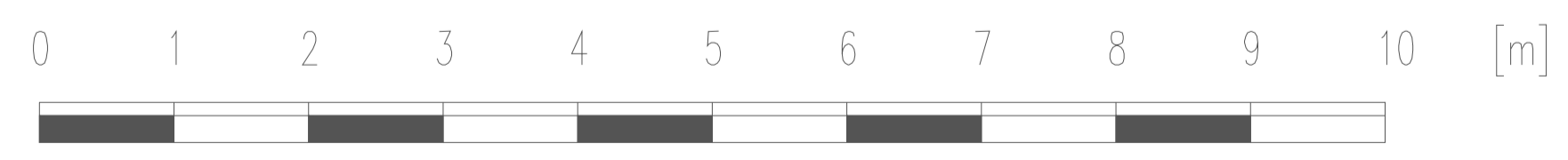
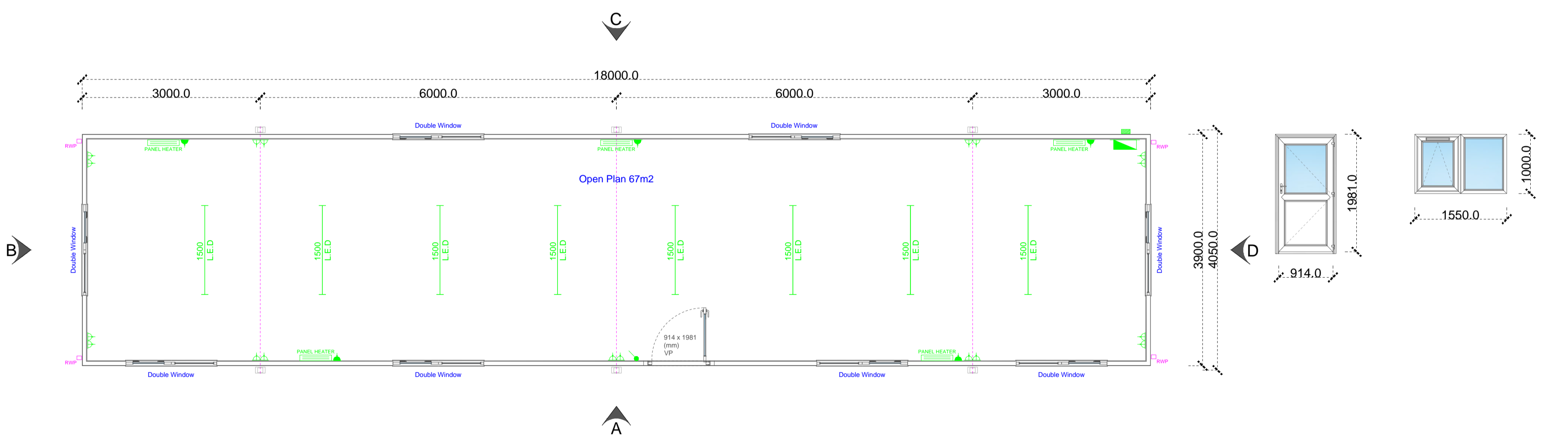
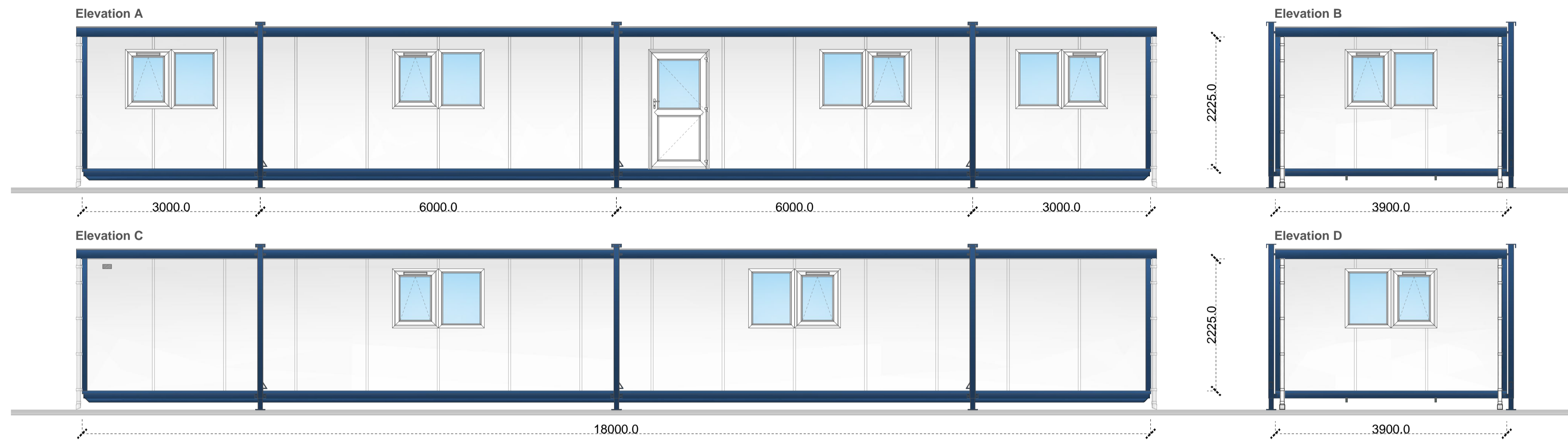


Building Specification
 Main Body: Gocsewing Grey, 10A05,
 Plastic Coated Steel
 Fascia: Merlin Grey, 18B25
 Corners: Merlin Grey, 18B25
 Jacklegs: Merlin Grey, 18B25
 Door & Windows: White uPVC
 Flooring: TBC



Drawing Legend	
	Distribution Board
	Electrical Inlet
	Single 13Amp Socket (450mm AFFL)
	Double 13Amp Socket (450mm AFFL)
	Double 13Amp Socket (1100mm AFFL)
	H/L single switch fused spur
	Below work top level single switch fused spur
	Switched Spur
	Non Switched Spur
	Telephone Outlet Socket (450mm AFFL)
	Data Point
	20A DP Isolator
	45A DP Isolator
	6A Double Pole Pullswitch
	20A Double Pole Lightswitch (1200 AFFL)
	HL Convector Heater
	Convector Heater
	Tubular Heater
	Under Sink Water Heater
	Emergency Lighting
	Internal Bulkhead Light
	Fluorescent Light With Diffuser
	Category 2 Lighting
	L.E.D Tubular Lighting
	Vapor Proof Fluorescent Light
	External Bulkhead Lighting
	Passive Infrared Sensor
	Extractor Fan
	Air Conditioning Condenser
	Air Conditioning Unit
	Cold Water Point
	Rainwater Down Pipe
	Foul Outlet
	Frost Thermostat

REV	DATE	DESCRIPTION	BY



Client	
60' x 13' (18m x 3.9m)	
Project	
New Jackleg Cabin Building	
Drawing	
Plan & Elevations	
Drawn by:	Date
J.H	29/01/2020
Checked by:	Sheet Scale
	A1 1:50
Drawing number:	Rev Stock ref.
PBSE	

This drawing is to be read in conjunction with all related drawings. Do not scale from this drawing. All dimensions must be checked and verified on site before commencing any work or producing shop drawings. The originator should be notified immediately of any discrepancy. This drawing is copyright and remains the property of Portable Building Sales Ltd.